

# ○○○ PJSC «Geotech Seismic Services»





# Geotech Seismic Services

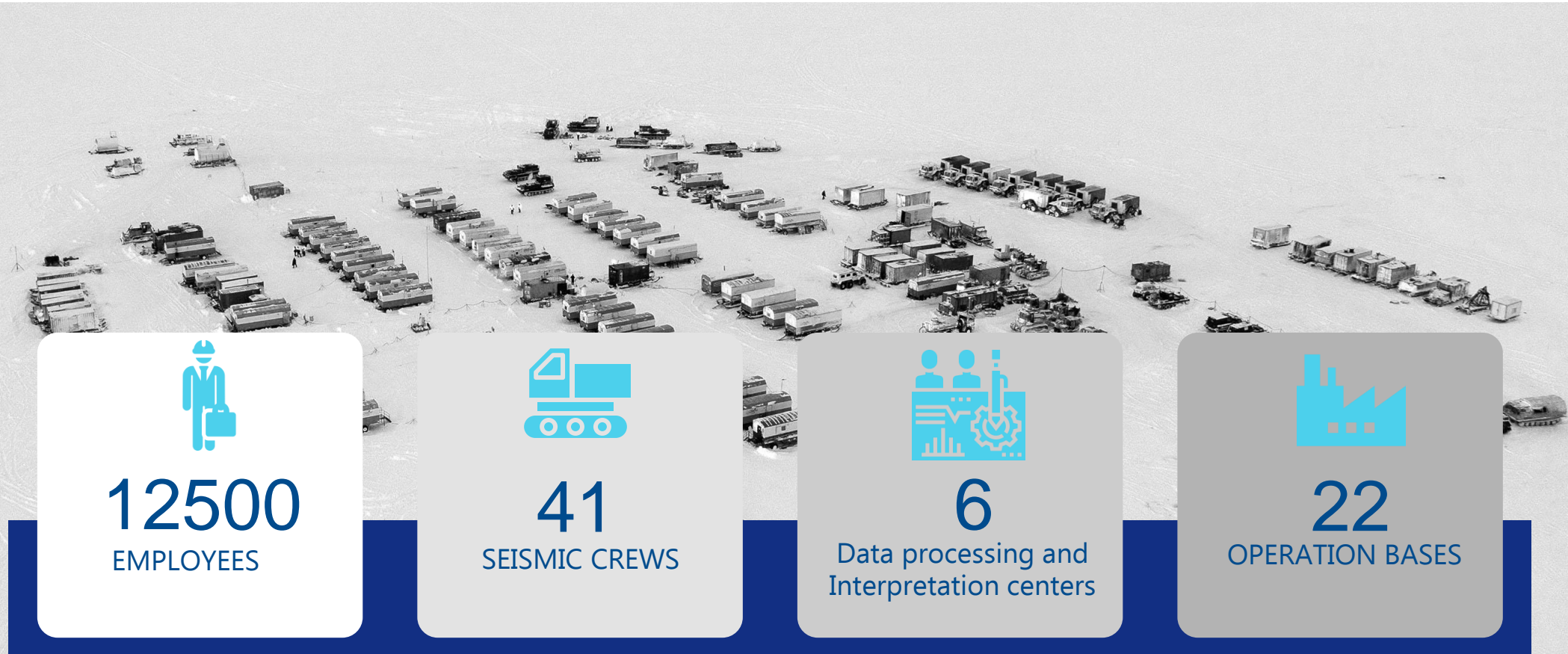
The largest geophysical company  
Seismic survey in on-shore and transition zone

Key petroleum areas of Russia  
West and East Siberia  
Timano-Pechora and  
Volga-Urals petroleum provinces

Experience

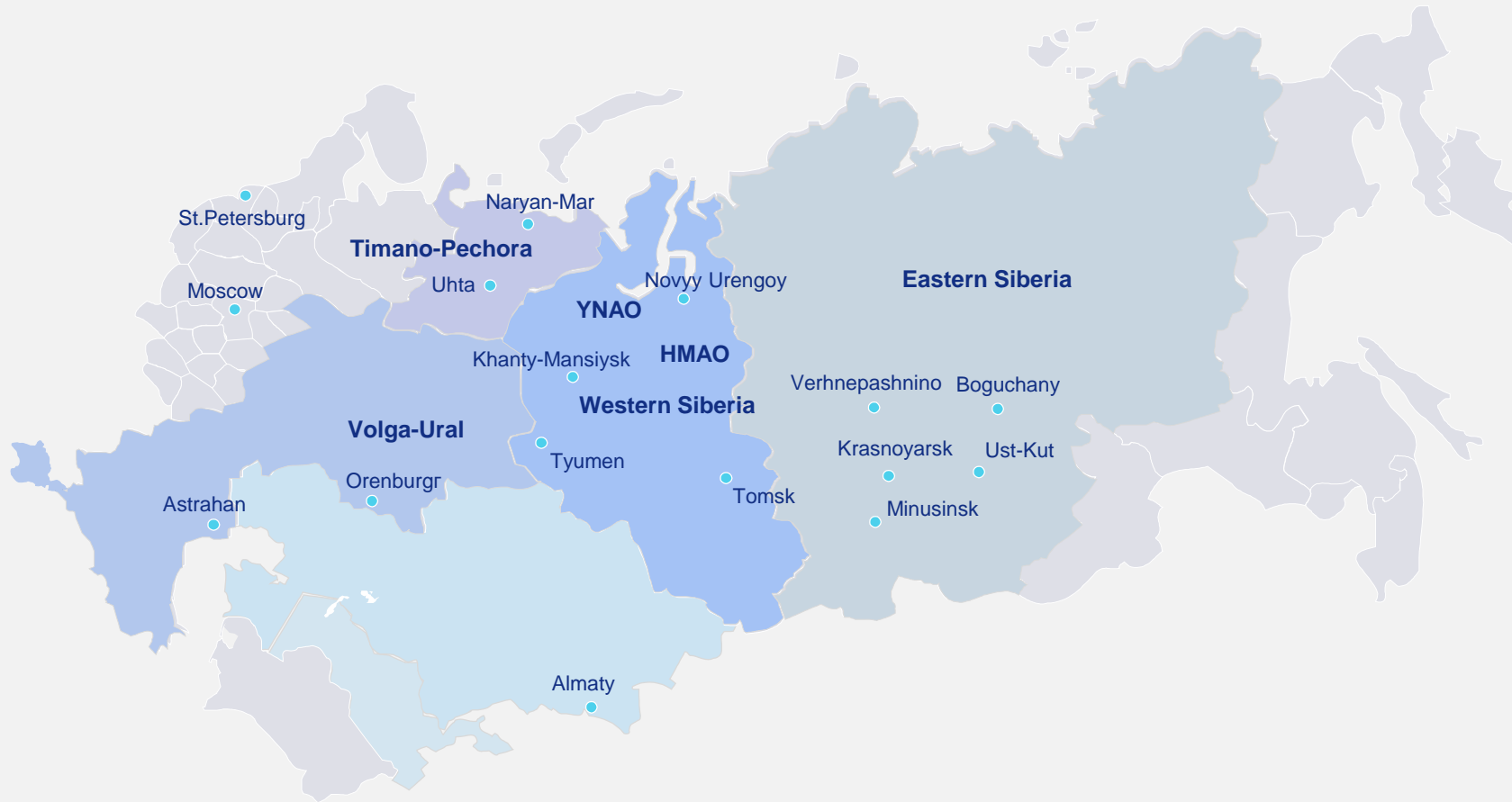
Azerbaijan,  
Kazakhstan,  
Uzbekistan,  
Turkmenistan,  
Cuba, India and  
Mauritania

# BASIC FIGURES





# Work geography



## Data processing and interpretation centers and units

LLC «GeoPrime» (daughter company) Moscow, r.St. Petersburg, Tyumen, Tomsk, Khanty-Mansiysk  
JSC «Geostan» (daughter company), Almaty, Kazakhstan  
LLC «Eniseygeophysika» (daughter company) Minusinsk, Krasnoyarsk region

### Timano-Pechora

OJSC «Severgeofizika»  
(daughter company)  
Uhta city, Komi Republic

### North of Eastern Siberia

The branch of PJSC «GEOTECH  
Seismic Services»-  
«Yamalgeophysika-Wostok»  
Novyy Urengoy city, YNAO

### South of Eastern Siberia

PJSC «GEOTECH Seismic Services»  
Tyumen city, Tyumen region  
The branch of PJSC «GEOTECH Seismic  
Services» -  
«Tyumenneftegeophysika»  
Tyumen city, Tyumen region

### Central part of Russia

Moscow branch of PJSC «Geotech  
Seismic Services», Moscow

### South of Russia

The branch of PJSC «GEOTECH Seismic  
Services»  
Orenburg city, Orenburg region  
Production management PJSC  
«GEOTECH Seismic Services»  
Astrakhan city, Astrakhan region

### Kazakhstan

JSC «Azimuth Energy Services»  
(Almaty city, Kazakhstan) (daughter  
company)

### Eastern Siberia

LLC «GEOTECH – Eastern geophysical company»  
(daughter company)  
Ust-Kut city, Irkutsk region

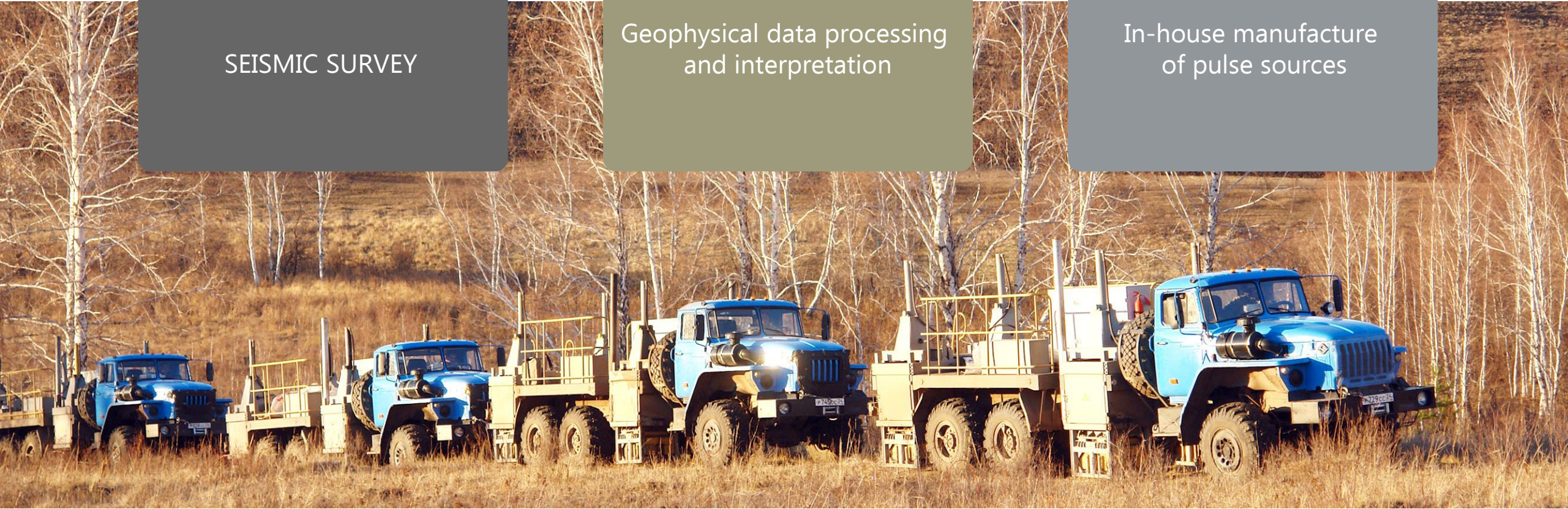
# OUR BUSINESS

THE COMPLETE SET OF SEISMIC SERVICES

SEISMIC SURVEY

Geophysical data processing  
and interpretation

In-house manufacture  
of pulse sources





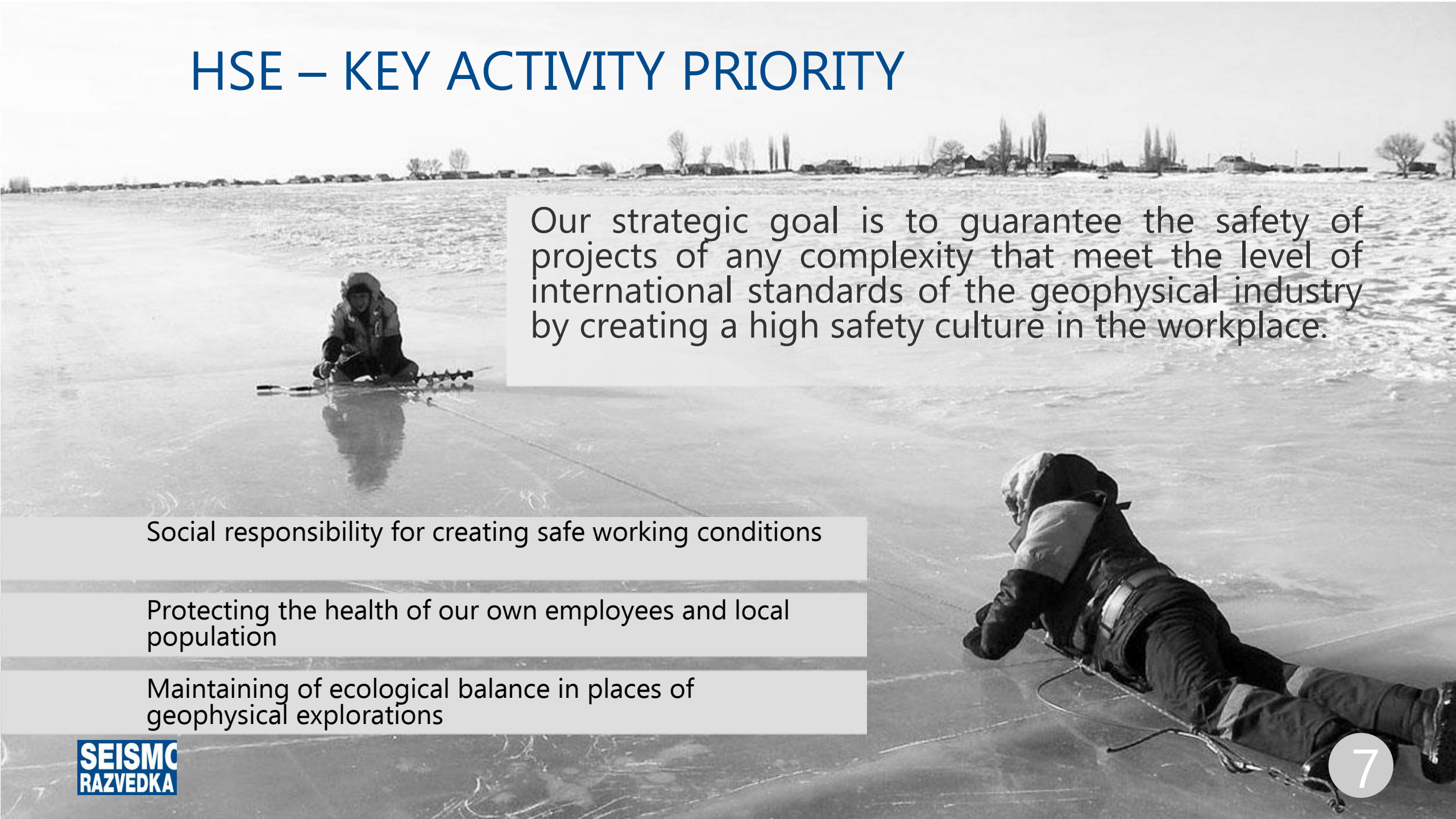
# KEY CLIENTS



# Operational indicators

SEISMIC	2016	2017	2018
Volume of data acquisition (SP)	1 024 125	1 161 484	1 230 074
2D	159 199	18 385	50 034
3D, 3D	662 978	841 674	917 305
Transition zone	201 948	238 425	262 735

# HSE – KEY ACTIVITY PRIORITY



Our strategic goal is to guarantee the safety of projects of any complexity that meet the level of international standards of the geophysical industry by creating a high safety culture in the workplace.

Social responsibility for creating safe working conditions

Protecting the health of our own employees and local population

Maintaining of ecological balance in places of geophysical explorations



# DATA PROCESSING AND INTERPRETATION

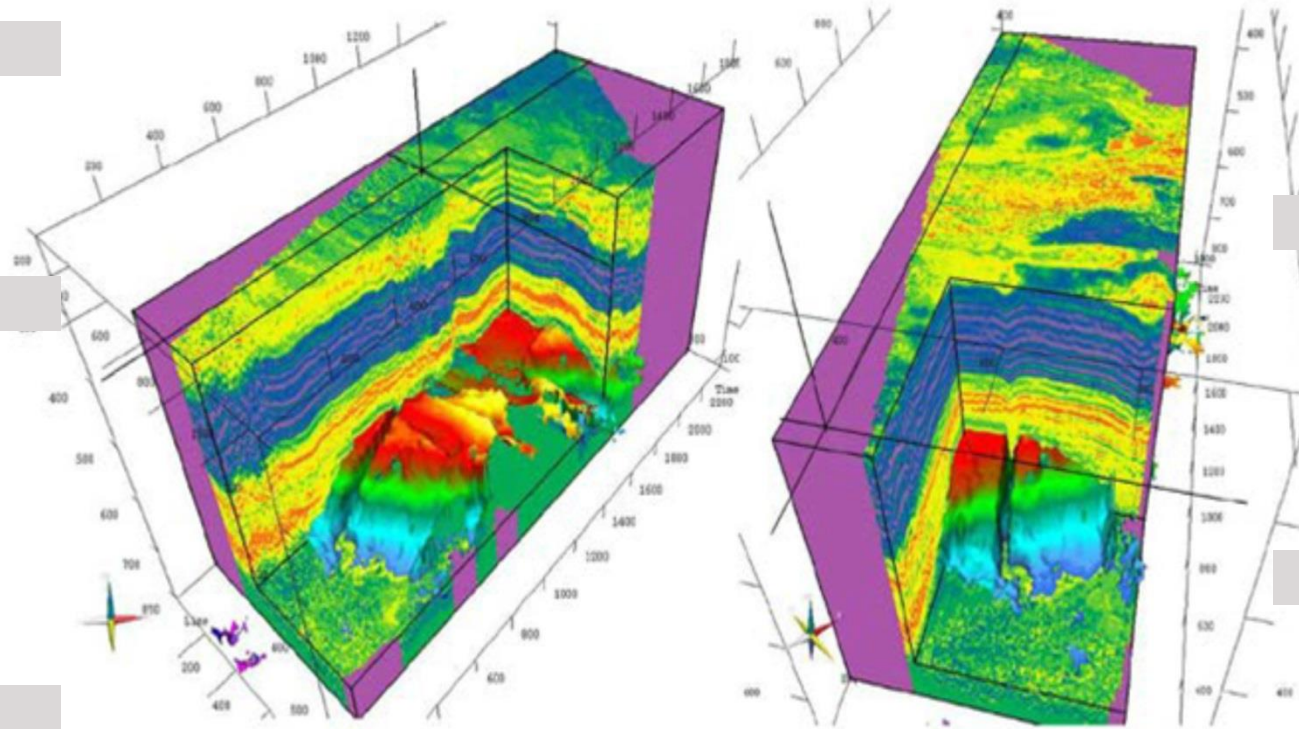
6 up-to-date centers  
of data processing  
and interpretation

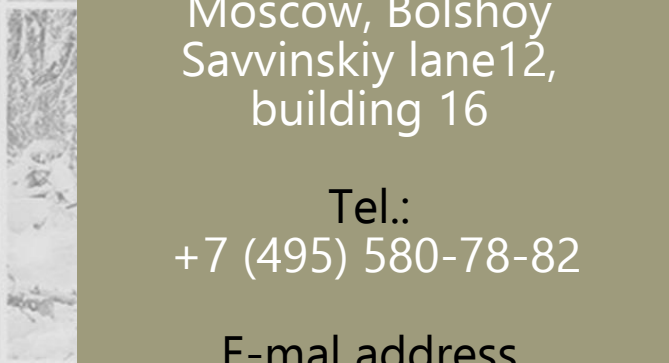
OmegaTM и Petrel  
software

Software solutions of  
other developers:  
CGGVeritas,  
Hampson-Russell,  
Landmark, Paradigm,  
Roxar, ProMax

Access and technical  
support for all  
advanced  
technologies  
WesternGeco  
(Schlumberger)

More than  
350 highly qualified  
geologists,  
geophysicists,  
engineers and  
IT specialists





# CONTACTS

Address of Moscow  
branch

119435, Russia,  
Moscow, Bolshoy  
Savvinskiy lane12,  
building 16

Tel.:  
+7 (495) 580-78-82

E-mail address  
[reception2@gseis.ru](mailto:reception2@gseis.ru)

Address

625023, Russia,  
Tyumen Respubliky  
str., 173

Tel.:  
+7 (3452) 53-25-00

E-mail address  
[reception@gseis.ru](mailto:reception@gseis.ru)

**SEISMO  
RAZVEDKA**